

Phone: 01964 533343

Email: info@hpsestateagents.co.uk

HPS
ESTATE AGENTS



Cherry Close Tansley Lane , HU18 1TU

This attractive three-bedroom detached home is situated in a quiet cul-de-sac within a sought-after area of Hornsea. The property offers spacious and well-proportioned accommodation throughout, including a generous kitchen diner, a separate utility room, and a master bedroom with en-suite facilities, complemented by a modern family bathroom.

Externally, the home benefits from well-maintained front and rear gardens, along with a private driveway and garage, providing excellent outdoor space, parking and storage.

It's just a short drive to the scenic Hornsea Beach, and outdoor activities around Hornsea Mere, Yorkshire's largest freshwater lake and wildlife haven. Nearby are well-regarded local schools, easy access to local transport links. Hornsea combines coastal living with community convenience, appealing to those looking for a quieter lifestyle with easy access to seaside walks, local festivals and family-friendly attractions.

This home must be viewed to truly appreciate what it has to offer!

EPC rating- C, Council tax band-D, Tenure- Freehold

Offers Over £260,000

www.hpsestateagents.co.uk

Entrance Hall

6'3" x 5'8" (1.92 x 1.75)

Double glazed entrance door, carpeted floor with staircase leading to first floor landing. Door leading to the cloakroom.

Living Room

14'0" x 10'4" (4.29 x 3.16)

Bay leaded window overlooking the front of the property, carpeted flooring and French doors leading to the kitchen diner.

Kitchen /diner

19'7" x 8'2" (5.98 x 2.49)

The kitchen- diner is fitted with a stainless steel sink unit with drainer, a gas hob, and an electric double oven, complemented by a splash back and aluminum-style laminate work surfaces. The room includes an integrated dishwasher and fridge/freezer, vinyl flooring, and patio-style leaded doors, creating a bright and practical space for cooking and dining. Stainless steel work surface creating a work station for all cooking preparation.

Cloakroom WC

6'11" x 2'7" (2.12 x 0.80)

The cloakroom includes a window to the front of the property, a low-level WC, and a pedestal wash hand basin. It features vinyl flooring and tiled walls around the sink area for a practical and stylish finish.

Utility

8'10" x 6'9" (2.70 x 2.07)

Utility room features a wall-mounted pantry, ample work surface and space for a washing machine. It is finished with durable vinyl flooring and provides direct access to the integral garage.

First Floor Landing

9'0" x 3'7" (2.75 x 1.10)

Carpeted flooring, radiator and convenient access to the loft space. Doors leading to the bedrooms and bathroom.

Master Bedroom

10'4" x 10'6" (3.16 x 3.21)

Window facing to the front of the property, fitted shelving, radiator plus carpeted flooring.

En-Suite

8'9" x 6'10" (2.67 x 2.09)

A modern step-in shower, wash hand basin set within a vanity unit, a low-level WC. The space is finished with fully tiled walls, vinyl floor, and a heated towel rail for added comfort.

Bedroom 2

8'8" x 7'11" (2.66 x 2.43)

Window facing to the rear of the property, a radiator and carpeted flooring,

Bedroom 3

10'6" x 7'10" (3.21 x 2.41)

Window facing to the rear of the property, fitted shelving, a radiator and carpeted flooring.

Bathroom

5'6" x 7'2" (1.68 x 2.19)

The bathroom features a paneled bath with an integrated mixer tap and over-bath shower, a stylish vanity unit with hand wash basin, a low-level WC, laminate flooring, fully tiled walls for a clean, modern finish also heated towel rail.

Garage

8'6" x 17' (2.59m x 5.18m)

Power and light laid on, roller main door plus internal door leading into the utility room.

Front Garden

Tarmacked area plus graveled area creating ample parking spaces as well as access to the garage. Graveled garden boasting low maintenance shrubbery.

Rear Garden

Well established secluded garden with a combination of patio area, lawned section and mature borders, boasts a garden shed plus access to the front of the house. Mainly fenced boundaries.

About Us

HPS is a trusted and recognised Estate Agents in the local market, our sales team brings together industry expertise, genuine passion, and a forward-thinking approach to property. Whether you're buying, selling, or exploring something new, we deliver a level of service that's as supportive as it is results-driven. From stylish residential homes to thriving commercial spaces, we're with you from the first enquiry to the moment you step confidently into your new property. If you're ready for a smoother, smarter and more personalised experience, give us a call —your next move starts here.

Disclaimer

Laser Tape Clause - Laser Tape Clause
All measurements have been taken using a laser tape measure and

therefore, may be subject to a small margin of error.

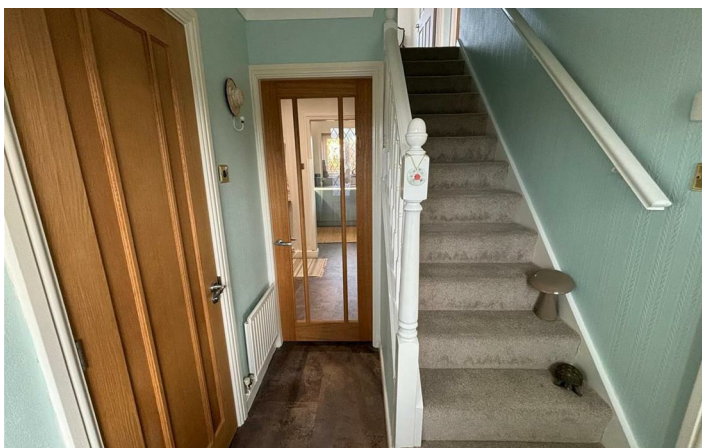
Disclaimer - These particulars are produced in good faith, are set out as a general guide only and do not constitute, nor constitute any part of an offer or a contract. None of the statements contained in these particulars as to this property are to be relied on as statements or representations of fact. Any intending purchaser should satisfy him/herself by inspection of the property or otherwise as to the correctness of each of the statements prior to making an offer. No person in the employment of HPS Estate Agents has any authority to make or give any representation or warranty whatsoever in relation to this property.

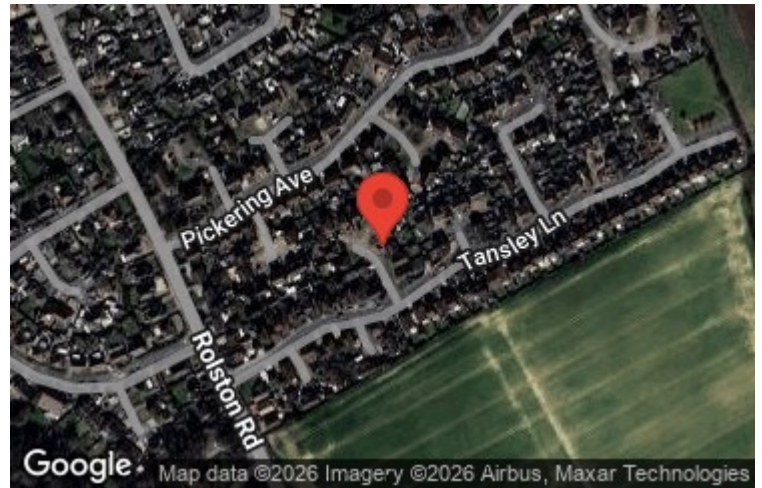
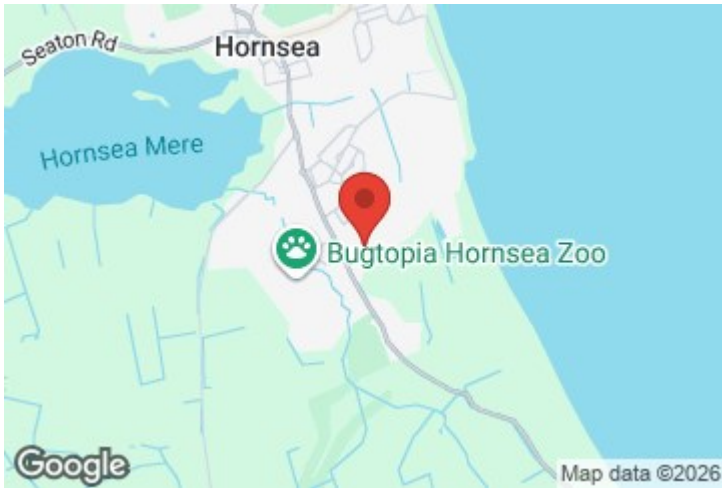
Valuations

If you are considering selling your home, our valuer would be delighted to meet with you to discuss your requirements. Our dedicated team works closely with you, providing support and guidance every step of your journey.

Call to book your FREE Valuation on 01964 533343.

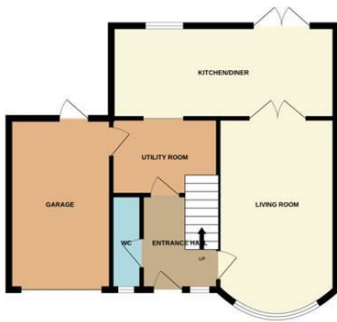
- Sought after location
- Master bedroom with En-Suite
- Energy rating C
- Low maintenance gardens
- Detached property in a quiet cul de sac
- Kitchen diner with many features
- Off street parking for several cars
- Garage with internal access
- Utility room
- Must be viewed to truly appreciate this property





Floor Plan

GROUND FLOOR



1ST FLOOR



Whilst every attempt has been made to ensure the accuracy of the floorplan contained here, measurements of doors, windows, rooms and any other items are approximate and no responsibility is taken for any error, omission or mis-statement. This plan is for illustrative purposes only and should be used as such by any prospective purchaser. The services, systems and appliances shown have not been tested and no guarantee as to their operability or efficiency can be given.
Made with Metropix ©2025

These particulars, whilst believed to be accurate are set out as a general outline only for guidance and do not constitute any part of an offer or contract. Intending purchasers should not rely on them as statements of representation of fact, but must satisfy themselves by inspection or otherwise as to their accuracy. No person in this firm's employment has the authority to make or give any representation or warranty in respect of the property.

